

# MAGNUM POLYMERS



We mould your Ideas...

An ISO TS 16949 & ISO 14001 Certified Company





# Index

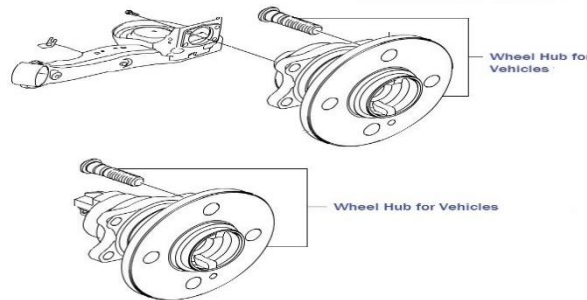


1. Company Introduction
2. Our Prestigious Customers
3. Awards By Customer
4. Magnum Units
5. Future Vision
6. Machining Capacity
7. Mould Manufacturing Capabilities
8. Quality Control
9. Product Portfolio
10. Thanking Note

Magnum Polymers!! was established in the Year 1995 by Mr. Rajiv Kumar Trehan, Qualified Plastics Technologist who is also Presently the Managing Director of the Company.

Magnum Polymers has Over 27 Years of experience of working with big Players of Industrial & Automotive Market like **IFB, SAMSUNG, PANASONIC, ONIDA, LIVPURE, AMBER, JTEKT, KOYO, RANE NSK, HERO, EMERSON, MINDA, MOTHERSON, ILJIN** and Satisfying them over the Years.

Presently, Magnum Polymers is known for its Quality Injection & Blow Moulding Products, Precision Insert Moulding Steering Components, Precision Moulds, Problem solving Techniques, and solutions, Cost Reduction Projects, Import Replacements. Also Provides Solutions For High Precision Critical Steering And 3rd Generation Wheel Hub Assembly Components For Automotive Sector.







# Accolades For Delivery, Quality, Cost Competence, Indigenization & CSR Activity!!



Recognition from JTEKT SAN for Delivery



Recognition from JTEKT SAN for Quality



Recognition from SONA SAN for Quality



Recognition from JTEKT for Indigenization



Recognition from SONA SAN for Cost Competence



Recognition for CSR Activity

04-A

# Manufacturing Unit-I Green Vendor From MSIL



Plot No. 14, HSIDC Industrial Estate, Sector - 59,  
Faridabad Haryana (INDIA).

Telephone : +91-9310040234

E-Mail : [abhay@magnumpolymers.com](mailto:abhay@magnumpolymers.com)

Manufacturing Facilities here includes:

- ☐ Precision Injection Moulded ,
- ☐ Precision Insert moulded,
- ☐ Small Blow Moulded

Automotive SAFETY Parts & Assemblies.





Plot No. 25, PRAGATI VIHAR Industrial Estate,  
Sector - 59, Faridabad Haryana (INDIA).

Manufacturing Facilities here includes

- ❑ Large Blow Moulded Parts for Automobiles & appliances manufacturers.





04-C

## Upcoming Manufacturing Unit-III

# ***MAGNUM TECHNOLOGIES***

**SALTILLO, MEXICO**



Manufacturing Facilities here includes

- ☐ Injection Moulded, Blow Moulded Parts for Automobiles & appliances manufacturers.



## ➤ Future Expansion Plans:

- ☐ To Acquire 3-4 Acre Land Near By KMP Expressway, Palwal, Haryana.
- ☐ To Build In-House Power Press Production Line For High Precision Sheet Metal Parts.
- ☐ To Build In-House Powder Coating Production Line.
- ☐ To Build In-House Brass Insert Nut Machining Production Line.
- ☐ To Build In-House Precision CNC Turned Ferrous & Non-Ferrous Parts, So, As To Provide Complete Assemblies To End Customers.

# Machining Capacity



Blow Moulding Machine



Verticle Rotary Injection Moulding Machine



Horizontal Injection Moulding Machine

06-A

# Blow Moulding Capacity



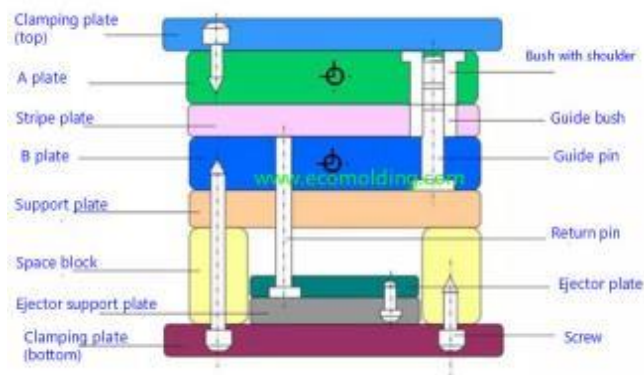
Machine Name & Description	Capacity / Specification	No. Off	Make
FULLY AUTOMATIC BLOW MOULDING M/c	1 LTR	1	JAGMOHAN
FULLY AUTOMATIC BLOW MOULDING M/c	3 LTR	2	JAGMOHAN
FULLY AUTOMATIC BLOW MOULDING DOUBLE STATION M/c	5 LTR	2	JAGMOHAN
FULLY AUTOMATIC BLOW MOULDING M/c	15 LTR	1	JAGMOHAN
FULLY AUTOMATIC BLOW MOULDING M/c	20 LTR	1	JAGMOHAN
FULLY AUTOMATIC BLOW MOULDING M/c	30 LTR	1	JAGMOHAN
FULLY AUTOMATIC BLOW MOULDING M/c	40 LTR	1	JAGMOHAN
FULLY AUTOMATIC BLOW MOULDING M/c	80 LTR	1	JAGMOHAN
FULLY AUTOMATIC BLOW MOULDING M/c	150LTR	1	JAGMOHAN



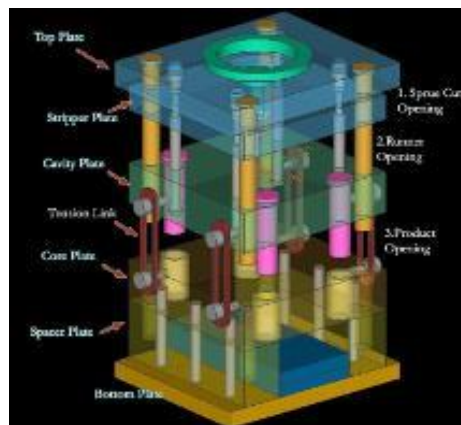
Machine Name & Description	Capacity / Specification	No. Off	Make
FULLY AUTOMATIC INJECTION MOULDING M/c	35 TONNES	1	TOYO
FULLY AUTOMATIC INJECTION MOULDING M/c	40 TONNES	1	NISSEI
FULLY AUTOMATIC INJECTION MOULDING M/c	80 TONNES	1	KRAUSS MASSEI
FULLY AUTOMATIC INJECTION MOULDING M/c	80 TONNES	1	ENGEL
VERTICLE INSERT INJECTION MOULDING MACHINE - ROTARY	100 TONNES	1	HISHIYA-TIE BAR LESS
VERTICLE INSERT INJECTION MOULDING MACHINE - ROTARY	100 TONNES	1	NISSEI
FULLY AUTOMATIC INJECTION MOULDING M/c	150 TONNES	1	HPM
FULLY AUTOMATIC INJECTION MOULDING M/c	150 TONNES	1	MITSUBISHI
FULLY AUTOMATIC INJECTION MOULDING M/c	150 TONNES	1	ALL PLAS
FULLY AUTOMATIC INJECTION MOULDING M/c	150 TONNES	1	CININNATI
FULLY AUTOMATIC INJECTION MOULDING M/c	160 TONNES	2	ARBURG
FULLY AUTOMATIC INJECTION MOULDING M/c	250 TONNES	1	VANDORN
FULLY AUTOMATIC INJECTION MOULDING M/c	250 TONNES	2	TOSHIBA
FULLY AUTOMATIC INJECTION MOULDING M/c	350 TONNES	2	VANDORN
FULLY AUTOMATIC INJECTION MOULDING M/c	500 TONNES	1	CININNATI

# Tool-Room Capacity

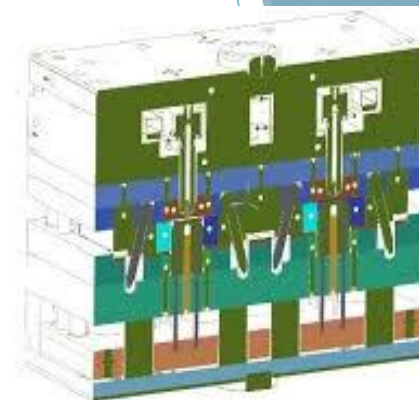
1	LATHE MACHINE	6 FEET	GD
2	LATHE MACHINE	4 FEET	GD
3	VERTICAL MILLING MACHINE	2" INCH	PRECICUT
4	DRILLING	1/2" INCH	ITCO
5	VERTICAL MACHINING CENTRE ( VMC )	VM700	TAL TATA
6	SURFACE GRINDER	9X14"	MACHINO
7	SURFACE GRINDER	9X18"	GURU ARJUN
8	SURFACE GRINDER	9X20"	GURU ARJUN
9	SURFACE GRINDER (AUTOMATIC)	10X32"	KASTRUP-DANMARK
10	EDM (SPARK EROSION)	520X30	ELECTRONICA PSR SERIES
11	CNC WIRECUT(ECO 40 S)	600X1050	JK MACHINE
12	DRILL EDM (BH703)	600X400	JK MACHINE
13	ZNC EDM (ZNC 30 C)	850X590X370	JK MACHINE



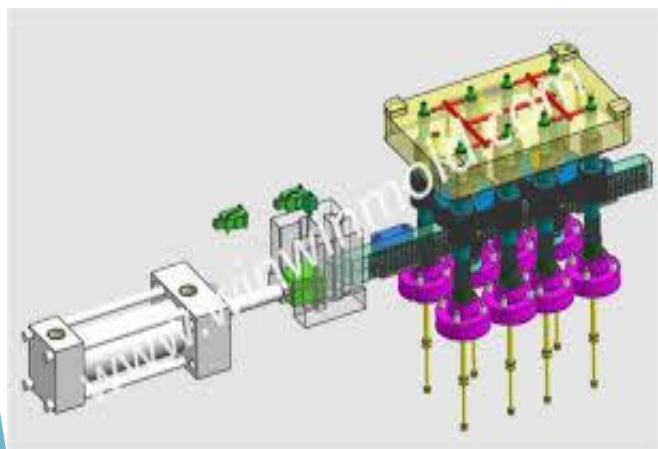
2-PLATE MOULD



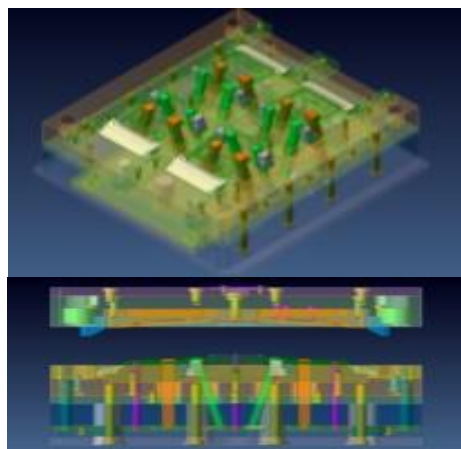
3-PLATE MOULD



HOT RUNNER MOULD



UNSCREWING MOULD



MOULDS WITH MULTIPLE LIFTERS AND SIDE CORES

MULTIPLE INSERT MOULDING MOULDS

BLOW MOULDS FROM  
1 LITRE TO 200 LITRES

MOULDS SUITABLE FOR PROCESSING  
HIGH PERFORMANCE MATERIAL LIKE  
PEEK, PPS ETC.



**bsi.**

**Certificate of Registration**

QUALITY MANAGEMENT SYSTEM - IATF 16949:2016

This is to certify that:

Magnum Polymers  
14, Sec-59  
HSIDC Industrial Estate  
Faridabad 121 004  
Haryana  
India

operates a Quality Management System which complies with the requirements of IATF 16949:2016 for the following scope:

The Manufacture of Injection and Blow Moulded Plastic Components.  
Permitted exclusions: Product Design

For and on behalf of BSI:

*N. Venkataram*  
Managing Director, BSI India, Venkataram Arabolu

BSI Certificate Number: 703431  
IATF Number: 0354641

Page: 1 of 1

...making excellence a habit.  
Expiry Date: 2022-05-19

Certification Date: 2019-05-20 Latest Issue: 2019-05-20

This certificate was issued electronically and remains the property of BSI and is bound by the conditions of contract.  
An electronic certificate can be authenticated [online](https://www.bsi-globals.com/ClientDirectory).  
Printed copies can be validated at [www.bsi-globals.com/ClientDirectory](https://www.bsi-globals.com/ClientDirectory) or telephone +91 11 2692 9000.  
Further clarifications regarding the scope of this certificate and the applicability of IATF 16949:2016 requirements may be obtained by consulting the organization.  
This certificate is valid only if provided original copies are in complete set.  
IATF Contracted Office: BSI Assurance UK Limited, registered in England under number 7805321 at 389 Chiswick High Road, London W4 4AL, UK.  
BSI, The MIRA Corporate Suites (A-2), Plot 1 and 2, Ishwar Nagar, Mathura Road, New Delhi 110 065.  
A Member of the BSI Group of Companies.

**magnum**  
more to life

**QUALITY & ENVIRONMENT POLICY**

We Aim to be the BEST in our business class.

We commit to achieve the maximum customer satisfaction, produce best quality products, attain minimum profitability and achieve maximum production.

We will ensure this by:

- Implementing customer requirements.
- Rigorous Employee trainings, Involvement and Human Resource development.
- Total quality management - QMS, EMS & OHSAS
- Processes improvement and adherence
- Best utilization of resources.
- Motivation and Team building.
- Reducing pollution levels and improving environment.

**Rajiv Trehan**  
*Rajiv Trehan*  
(Managing Director)



We Have Installed All Fire Safety Equipment's As Per Safety Norm's



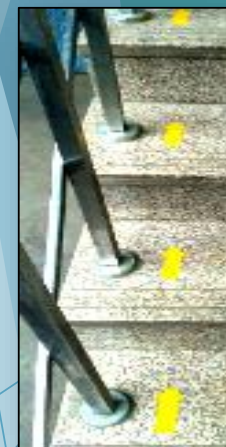
23 NOS Fire Extinguisher as per NBA distributed .6 trained Fire fighters



First Aid Box at every floor & 6 trained First aiders for first aid incidents



Clearly marked Emergency Exits



Dedicated marked staircase for avoiding collision



**Emergency assembly point at main gate.**

This Year -No Accident From 1<sup>st</sup> JAN-2019 to till date.  
SAFETY AUDIT DONE ON 08.01.2020 NEXT DUE ON -07.01.2021



Clearly marked Gangways on Shopfloor



08-C

## SAFETY AUDIT SCORE BY MACE



Way of Life!

## Fire Risk Assessment (VSA Clause 18 Fire Safety Audit)



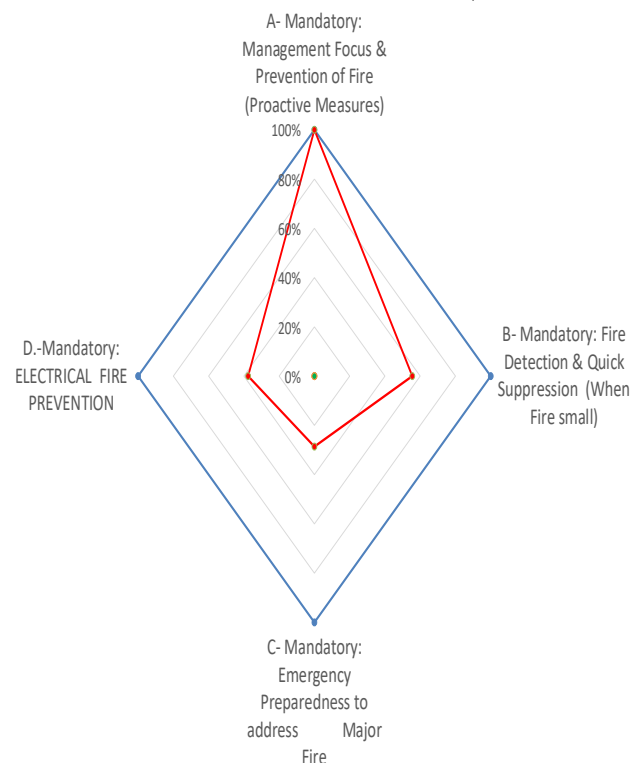
Revision 19-Aug-19

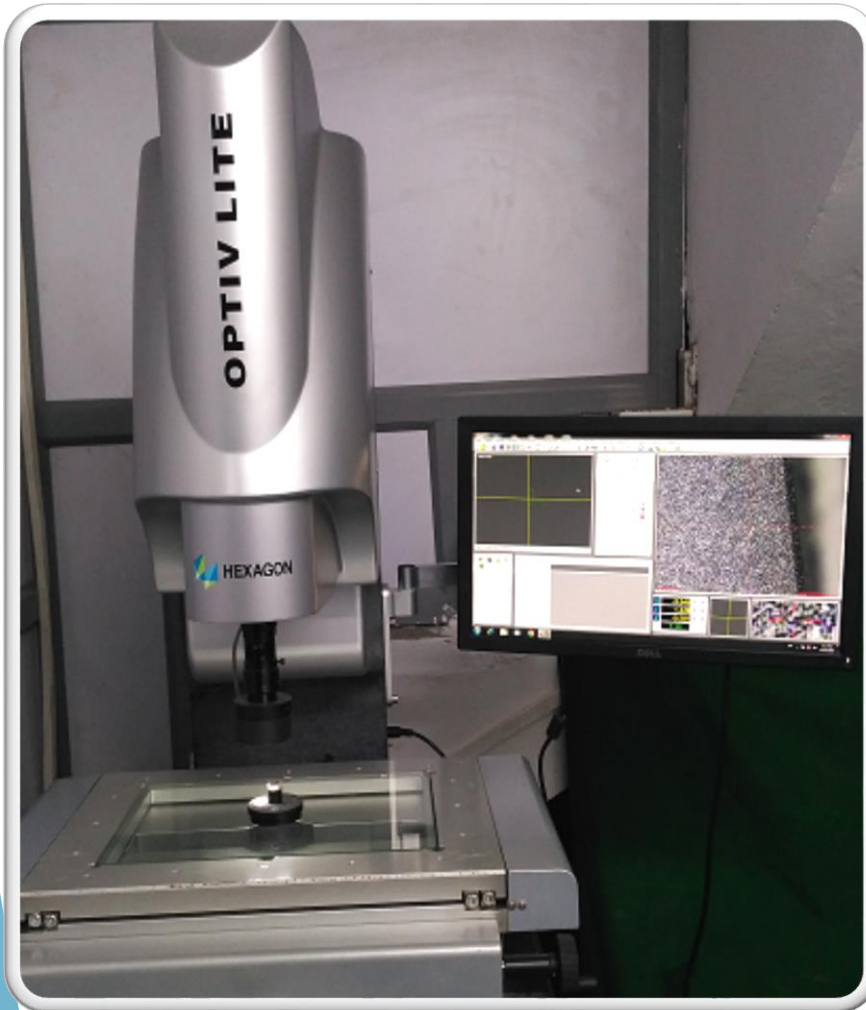
**For GREEN require Rating Score 100% For Mandatory and 50% For E- MSIL Other**

Note: Only written in White row and Select From Drop bar Auditor Name, OK/NG, and Prepared by

Date of Assessment		8-Jan-20							
Assessment		1st Assessment Result		NG		Follow Up Assessment Result		#DIV/0!	
Result Criteria		Category	Rating Score	Prepare By	Approved By	Score	Prepare By	Approved By	
100%	OK	Mandatory	47%	Nikhil 8053664111	SN Sharma 9999914022	#DIV/0!			
≥ 80 %	Can Improve	Other	#DIV/0!			#DIV/0!			
< 80 %	NG	Overall	47%			#DIV/0!			
MSIL Tier-1 Supplier(s) Name:		Tier-1 Contact Person	Name of Supplier (Tier-2):		Tier-2 Contact Person		Plant Location Address		
			Magnum Polymers		Mr. Charan Singh		Plot No. 14,HSIIDC Industrial Estate Sec-59 Ballabgarh, Faridabad		
Plot Area	Covered Area SQM	Nearest Local Fire Station (KM)	Plant Operation Started (Year):	Employees (No's)	GST No.	Low Hazard Area M2	Moderate Hazard Area M2	High Hazard Area M2	Basement Area M2
232 SQM	705	0.5 KM Sector 59	1992	60	06AACFM6615K1Z8	0	705		100
About Company Company is engaged in Plastic injection and blow molding process. Approximate turn over of the factory is 20 Cores per annum. Finishing, inspection and packing operations are carried on at second floor.									
Contact Detail T1: E:Mail & Mobile					Contact Detail T2: E:Mail & Mobile Mr. Charan Singh Plant Head 9871337551 magnumquality15@gmail.com				

Max Score % 1st Assessment % Score Follow up % Score





### *OPTIV Lite Vision Measuring System*

Measuring range (X,Y&Z) : 300x200x200mm

Accuracy : 3+L/150m (L in Meter)

Least count : 1 $\mu$ m

Camera : 1/3" colour CCD Camera

Bottom Light : LED, Adjustable brightness

Top Light : LED, Adjustable brightness

Magnification : 30X – 180X

Field of view : 8.2mm – 1.2 mm

Working Distance : 90mm

Max. Part Weight : 10Kg

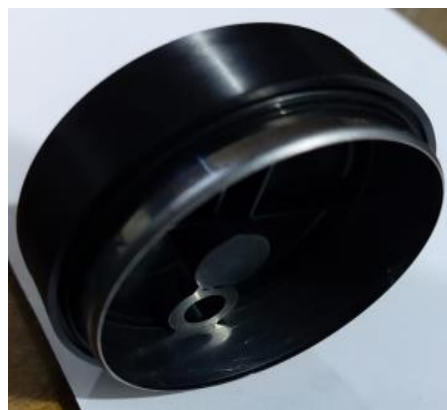
Model : OLM3020



**HEXAGON**  
METROLOGY

3<sup>rd</sup> GENERATION WHEEL HUB COMPONENTS

## PART NAME: SENSOR COVER



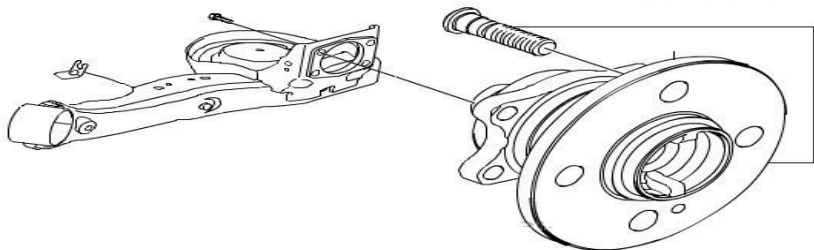


# Sensor Cover Application

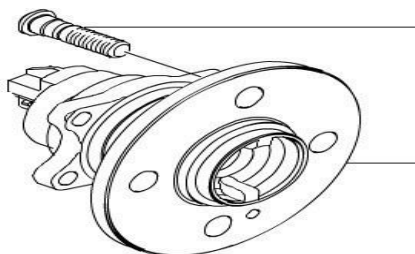


## 1 X REAR AXLE WHEEL BEARING HUB KIT

INTEGRATED  
ABS SPEED SENSOR



Wheel Hub for  
Vehicles



Wheel Hub for Vehicles



# HIGH PRECISION STEERING COMPONENTS



PART NAME: MAGNETIC RING ASSEMBLY



PART NAME: PROTECTOR OIL SEAL



PART NAME: SPACER TILT



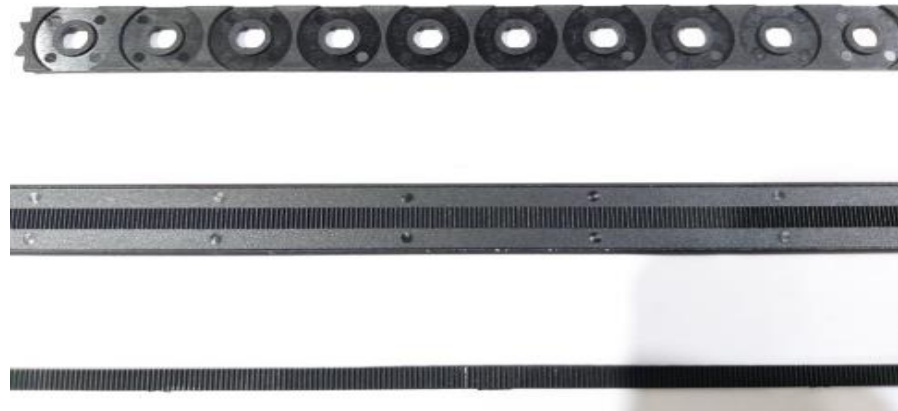
PART NAME: PLASTIC SLEEVE



PART NAME: HALF PROTECTOR CAP



PART NAME: NEEDLE BEARING CAGE



PART NAME: SPRING HOLDER / COG RAILWAY SHAFT

# ENGINEERD PRECISION INSERT MOULDED PARTS



PART NAME: SENSOR COVER



PART NAME: LEVER ASSEMBLY



PART NAME: BODY KOPA



PART NAME: MAGNETIC YOLK ASSEMBLY



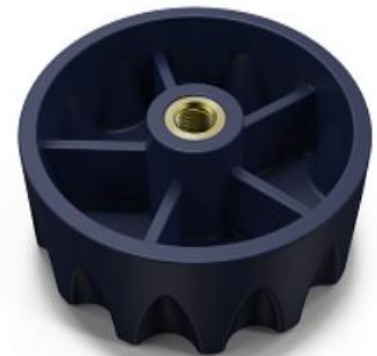
PART NAME: WIRING HARNESS CONNECTOR



PART NAME: Housing



PART NAME: Connector



PART NAME: PROTECTIVE CAP





# ENGINEERD PRECISION INJECTION MOULDED PARTS



PART NAME: ANTI SHIFT  
TRANSPORTATION PLUG



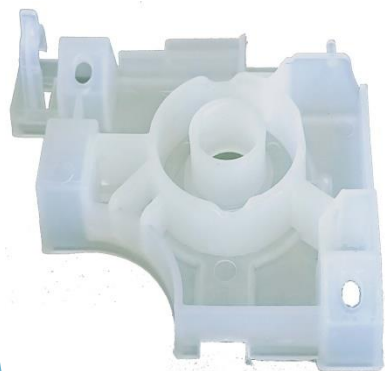
PART NAME: CAP STRG  
Gear CENTER MARKING



PART NAME: DV COVER



PART NAME: RETAINER BLOCK  
SLIDER



PART NAME: BASKET DRAIN



PART NAME: CONTROL COVER



PART NAME: COVER STEERING  
GEAR



PART NAME: DRAIN LEVER CAP



# ENGINEERD PRECISION INJECTION MOULDED PARTS



PART NAME: BOOT COVER



PART NAME: HAND GRIP  
NEW WAGON R



PART NAME: CENTRE MARKING CAP



PART NAME: DUST CAP



PART NAME: GUIDE TELESCO



PART NAME: LH DISK BEARING



PART NAME: COVER DUST



PART NAME: WEAR SPACER

# HIGH PRECISION EV BATTERY CASE





# TVS Housing Speedometer







# HIGH PRECISION BLOW MOULDED PART



IFB PART NAME: WASHER DRYER REFRESHER CONDENSOR  
APPLICABLE FOR BELOW TWO IFB PRODUCTS



IFB Model Name: Executive ZXS



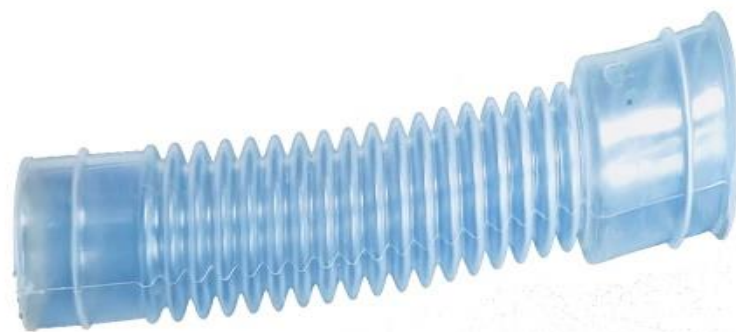
IFB Model Name: Executive ZXM



# HIGH PRECISION MEDIUM BLOW MOULDED PARTS



PANASONIC PART NAME: HOSE



SAMSUNG PART NAME: HOSE OVER FLOW



SAMSUNG PART NAME: HOSE PIPE

# HIGH PRECISION MEDIUM BLOW MOULDED PARTS



PART NAME: RO TANK



PART NAME: PP TANKS



PART NAME: MOTOR HOUSING



PART NAME: TANK ASSEMBLY

# HIGH PRECISION SMALL BLOW MOULDED PARTS



PART NAME: RESONATOR KONA



PART NAME: RESONATOR K1KA



PART NAME: RESONATOR B-97



PART NAME: RESONATOR K38



PART NAME: RESONATOR KTE



PART NAME: PIPE SILENSOR



PART NAME: RESONATOR KONA-E4



PART NAME: RESONATOR K1CA

# HIGH PRECISION LARGE BLOW MOULDED PARTS



PART NAME: DUCT



PART NAME: ND VERSA







# BLOW MOULDED BUS SEATS



## Magnum Polymers